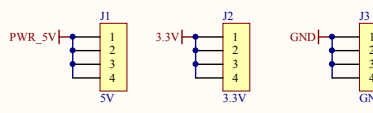
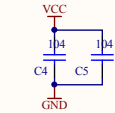


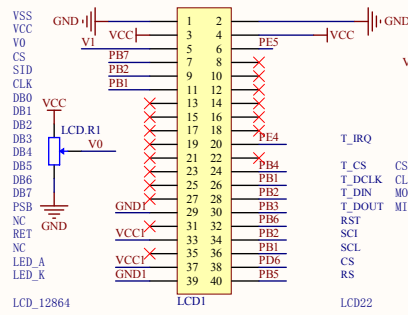
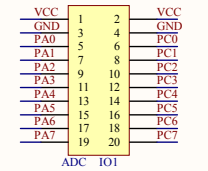
POWER



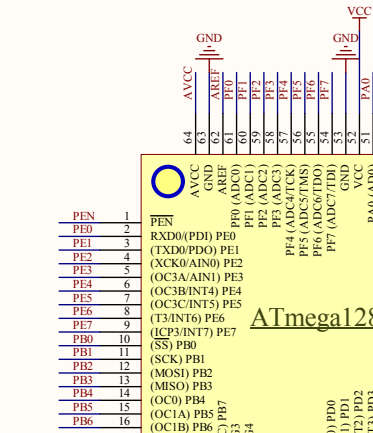
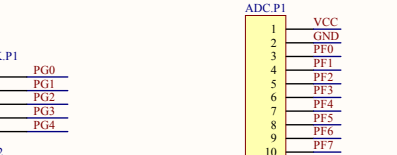
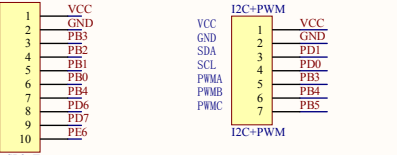
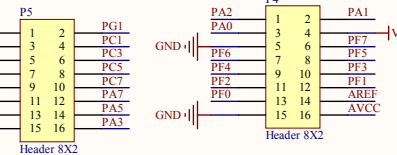
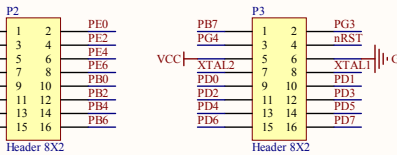
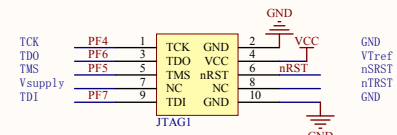
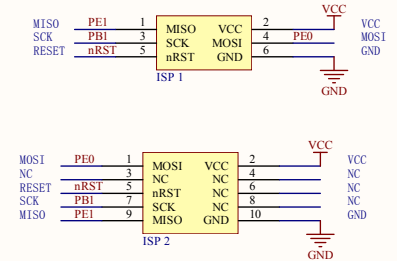
Port definition

12864	LCD22	TOUCH
MOSI	PB2	PB2
MISO	PB3	PB3
SCK	PB1	PB1
CS	PB7	PB4
RS	PB5	PB5
EST	PB6	PB6
IRQ	PB4	PB4
PWM	PE5	PB5

LCD PORT

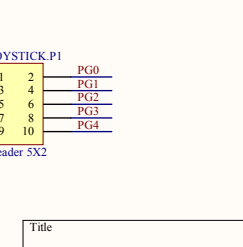
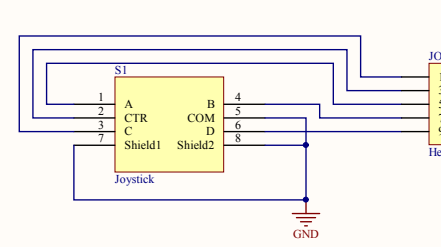
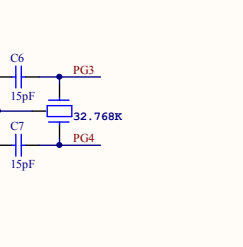
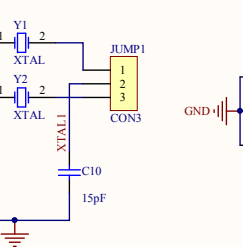
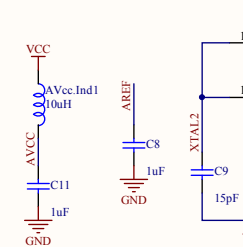
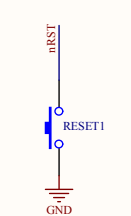


LCD22



ATmega128/64

RESET



Title		
Size	Number	Revision
A3		
Date:	2011/12/10	Sheet of
File:	E:\PCBU...OpenM128.SchDoc	Drawn By:

Comment	Description	Designator	Footprint	LibRef	Quantity
waveshare_logo			WS_symbol_XXL	waveshare_logo	1
ADC	Header, 10-Pin	ADC.P1	SIP10_LyingMoth	Header 10	1
Header 10X2		ADC IO1	SIP10_LyingMoth erX2	Header 10X2	1
10uH		AVcc.Ind1	RES	IND	1
104	Capacitor	C1, C3, C4, C5	0603	C_0805	4
10uF	Capacitor	C2	ws_3225_1	C_0805	1
Cap	Capacitor	C6, C7, C8, C9, C10, C11	0603	Cap	6
I2C+PWM	Header, 7-Pin	I2C+PWM	SIP7_LyingMother	Header 7	1
ISP 6PIN		ISP 1	ISP_6	ISP 6PIN	1
ISP 10PIN	ISP 10PIN	ISP 2	ISP_10	ISP 10PIN	1
5V	Header, 4-Pin	J1	SIP4	Header 4	1
3.3V	Header, 4-Pin	J2	SIP4	Header 4	1
GND	Header, 4-Pin	J3	SIP4	Header 4	1
Header 5X2	Header, 5-Pin, Dual row	JOYSTICK.P1	HDR2X5	Header 5X2	1
JTAG		JTAG1	ISP_10	JTAG	1
CON3	Connector	JUMP1	SIP3	CON3	1
Header 4X2	Header, 4-Pin, Dual row	KEY.P1	HDR2X4	Header 4X2	1
PB2		Key1, Key2, Key3, Key4	KEY	KEY	4
LED_0805		L1, L2, L3, L4, L5, L6, L7, L8, POW LED1	0805_LED	LED_0805	9
Header 3X2	Header, 3-Pin, Dual row	LCD.P1	HDR2X3	Header 3X2	1
RES_ADJ		LCD.R1	RESADJ	RES_ADJ	1
Header 20X2	Header, 20-Pin, Dual row	LCD1	LCD22	Header 20X2	1
LED JMP	Header, 8-Pin, Dual row	LEDJMP.P1	HDR2X8	Header 8X2	1
ONE_LINE	Header, 3-Pin	ONE.LINE.P1	SIP3	Header 3	1
Header 3H	Header, 3-Pin, Right Angle	P1	HDR1X3	Header 3H	1
Header 8X2	Header, 8-Pin, Dual row	P2, P3, P4, P5	DIP8X2	Header 8X2	4
PS2	Header, 6-Pin	P6	PS2	Header 6	1
5V	Power5	Power1	PWR_5V	Power5	1
Header 2X2	Header, 2-Pin, Dual row	PS1	HDR2X2	Header 2X2	1
switch		PWR.S1	SWITCH2-1	switch2-1	1
330	Resistor	PWRLED.R1	0603	R_0805	1
R_0603	Resistor	R1, R2, R3, R4, R5, R6, R7, R8	0603	R_0603	8
		RESET1	KEY	KEY	1
Joystick		S1	Joystick2	Joystick	1
SP2+T	Header, 10-Pin	SPI.P1	SIP10_LyingMoth	Header 10	1
LD1117		U1	SOT-223	LD1117	1
ATmega128		U2	TQFP64	ATmega128	1
USART0	Header, 8-Pin	USART0.P1	SIP8_LyingMother	Header 8	1
USART1+ICP1	Header, 5-Pin	USART1.P1	SIP5_LyingMother	Header 5	1
32.768K	CRYSTAL	X1	CRYSTAL3	XTAL2	1
XTAL	Crystal Oscillator	Y1	CRYSTAL1	XTAL	1
XTAL	Crystal Oscillator	Y2	CRYSTAL2	XTAL	1